

Student Opinion of Teaching Effectiveness (SOTE)- College of Arts & Letters Fall 2016 Term Summary

1. Rate your interest in the subject matter of this course before you took the class.

	Response by Course Level			
	Lower	Upper	Grad	Total
Very High (1)	25.5%	34.9%	47.8%	29.6%
High (2)	25.3%	25.8%	24.8%	25.5%
Moderately High (3)	23.0%	19.0%	16.6%	21.4%
Moderately Low (4)	11.0%	8.4%	8.3%	9.9%
Low (5)	10.6%	8.4%	1.3%	9.6%
Very Low (6)	4.6%	3.4%	1.3%	4.1%
Mean	2.7	2.4	1.9	2.6
Median	2	2	2	2
Count	4848	3119	157	8124

2. How many class sessions did you attend?

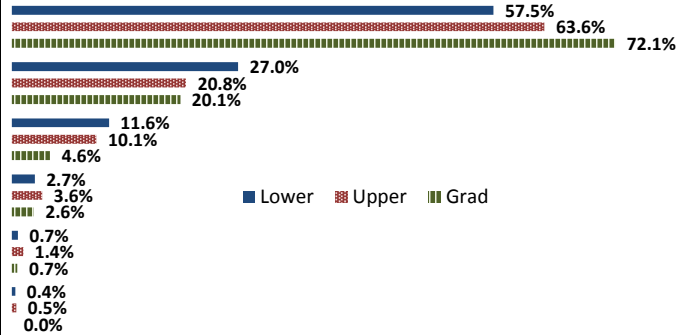
	Response by Course Level			
	Lower	Upper	Grad	Total
All (1)	50.9%	50.9%	54.5%	51.0%
Almost All (2)	45.6%	46.0%	44.9%	45.7%
More than Half (3)	3.1%	2.8%	0.6%	2.9%
Less than Half (4)	0.4%	0.4%	0.0%	0.4%
Mean	1.5	1.5	1.5	1.5
Median	1	1	1	1
Count	4849	3085	156	8090

3. Why did you take this course? Choose all that apply.

	Response by Course Level			
	Lower	Upper	Grad	Total
3a. The course fulfills a general education requirement.	69.7%	46.2%	28.8%	60.0%
3b. The course fulfills a requirement in my major.	26.4%	58.9%	76.3%	39.7%
3c. I have enjoyed the professor's class(es) in the past.	3.5%	9.6%	28.8%	6.3%
3d. The course will improve job/career opportunities.	17.5%	19.3%	36.3%	18.5%
3e. The course sounded interesting to me.	26.2%	32.5%	40.6%	28.9%

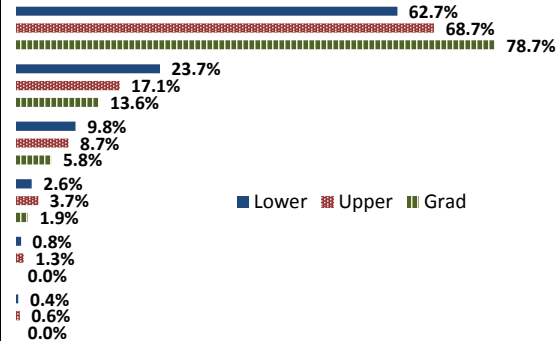
4. How would you rate the overall quality of instruction in this course?

	Response by Course Level			
	Lower	Upper	Grad	Total
Excellent (6)	57.5%	63.6%	72.1%	60.2%
Very Good (5)	27.0%	20.8%	20.1%	24.5%
Good (4)	11.6%	10.1%	4.6%	10.9%
Fair (3)	2.7%	3.6%	2.6%	3.1%
Poor (2)	0.7%	1.4%	0.7%	1.0%
Unsatisfactory (1)	0.4%	0.5%	0.0%	0.4%
Mean	5.4	5.4	5.6	5.4
Median	6	6	6	6
Count	4844	3104	154	8102



5. How would you rate your professor's specific contribution to you learning in this course?

	Response by Course Level			
	Lower	Upper	Grad	Total
Excellent (6)	62.7%	68.7%	78.7%	65.3%
Very Good (5)	23.7%	17.1%	13.6%	21.0%
Good (4)	9.8%	8.7%	5.8%	9.3%
Fair (3)	2.6%	3.7%	1.9%	3.0%
Poor (2)	0.8%	1.3%	0.0%	1.0%
Unsatisfactory (1)	0.4%	0.6%	0.0%	0.5%
Mean	5.4	5.5	5.7	5.5
Median	6	6	6	6
Count	4814	3083	155	8052



Student Opinion of Teaching Effectiveness (SOTE)- College of Business and Public Administration Fall 2016 Term Summary

1. Rate your interest in the subject matter of this course before you took the class.

	Response by Course Level			
	Lower	Upper	Grad	Total
Very High (1)	20.9%	30.1%	32.3%	28.6%
High (2)	22.6%	27.7%	25.9%	26.5%
Moderately High (3)	23.9%	22.4%	18.9%	22.3%
Moderately Low (4)	13.0%	9.0%	11.9%	10.1%
Low (5)	14.4%	7.7%	6.4%	8.8%
Very Low (6)	5.3%	3.0%	4.7%	3.6%
Mean	2.9	2.5	2.5	2.5
Median	3	2	2	2
Count	891	3308	530	4729

2. How many class sessions did you attend?

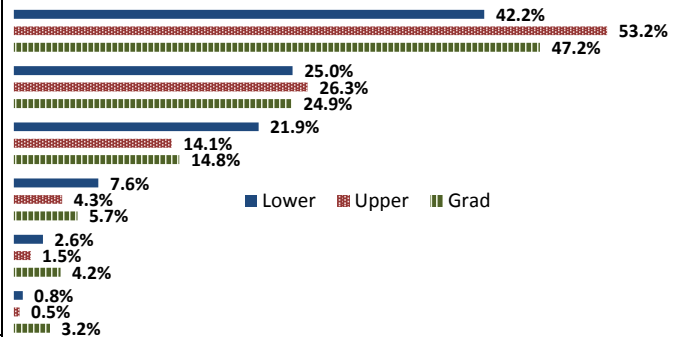
	Response by Course Level			
	Lower	Upper	Grad	Total
All (1)	58.5%	57.6%	70.9%	59.3%
Almost All (2)	37.9%	39.3%	25.5%	37.5%
More than Half (3)	2.5%	2.8%	2.3%	2.7%
Less than Half (4)	1.1%	0.3%	1.3%	0.6%
Mean	1.5	1.5	1.3	1.4
Median	1	1	1	1
Count	885	3301	529	4715

3. Why did you take this course? Choose all that apply.

	Response by Course Level			
	Lower	Upper	Grad	Total
3a. The course fulfills a general education requirement.	42.7%	26.7%	38.0%	31.1%
3b. The course fulfills a requirement in my major.	63.1%	80.2%	75.7%	76.4%
3c. I have enjoyed the professor's class(es) in the past.	2.7%	6.8%	8.2%	6.1%
3d. The course will improve job/career opportunities.	17.6%	25.0%	29.1%	24.0%
3e. The course sounded interesting to me.	13.8%	15.1%	19.3%	15.3%

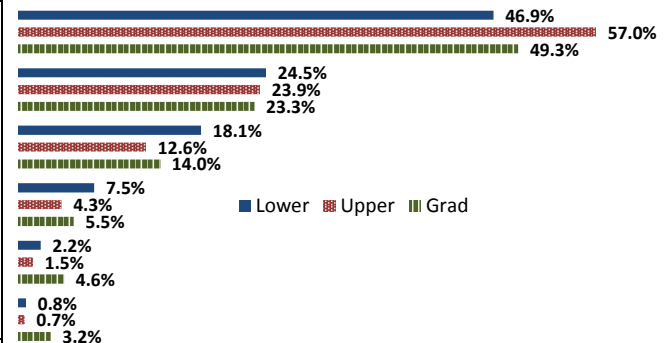
4. How would you rate the overall quality of instruction in this course?

	Response by Course Level			
	Lower	Upper	Grad	Total
Excellent (6)	42.2%	53.2%	47.2%	50.4%
Very Good (5)	25.0%	26.3%	24.9%	25.9%
Good (4)	21.9%	14.1%	14.8%	15.7%
Fair (3)	7.6%	4.3%	5.7%	5.1%
Poor (2)	2.6%	1.5%	4.2%	2.0%
Unsatisfactory (1)	0.8%	0.5%	3.2%	0.9%
Mean	4.9	5.2	5.0	5.2
Median	5	6	5	6
Count	885	3304	526	4715



5. How would you rate your professor's specific contribution to you learning in this course?

	Response by Course Level			
	Lower	Upper	Grad	Total
Excellent (6)	46.9%	57.0%	49.3%	54.2%
Very Good (5)	24.5%	23.9%	23.3%	23.9%
Good (4)	18.1%	12.6%	14.0%	13.8%
Fair (3)	7.5%	4.3%	5.5%	5.1%
Poor (2)	2.2%	1.5%	4.6%	2.0%
Unsatisfactory (1)	0.8%	0.7%	3.2%	1.0%
Mean	5.0	5.3	5.0	5.2
Median	5	6	5	6
Count	891	3276	527	4694



Student Opinion of Teaching Effectiveness (SOTE)- College of Education Fall 2016 Term Summary

1. Rate your interest in the subject matter of this course before you took the class.

	Response by Course Level			
	Lower	Upper	Grad	Total
Very High (1)	28.9%	39.7%	49.0%	43.3%
High (2)	43.3%	26.3%	24.1%	26.5%
Moderately High (3)	16.5%	19.5%	14.2%	16.9%
Moderately Low (4)	5.2%	6.4%	5.0%	5.7%
Low (5)	3.1%	5.7%	5.3%	5.3%
Very Low (6)	3.1%	2.4%	2.3%	2.4%
Mean	2.2	2.2	2.0	2.1
Median	2	2	2	2
Count	97	672	655	1424

2. How many class sessions did you attend?

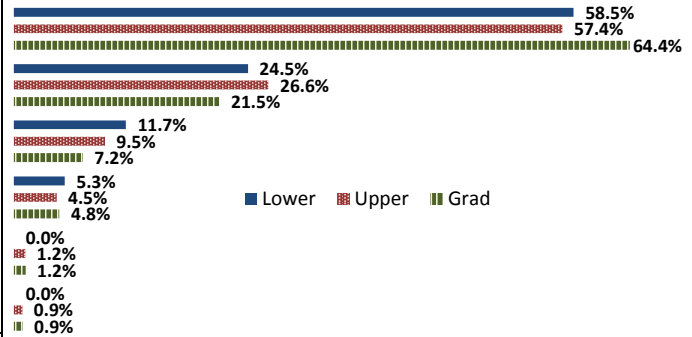
	Response by Course Level			
	Lower	Upper	Grad	Total
All (1)	61.2%	82.1%	78.6%	79.0%
Almost All (2)	38.8%	17.4%	21.1%	20.6%
More than Half (3)	0.0%	0.5%	0.2%	0.3%
Less than Half (4)	0.0%	0.2%	0.2%	0.1%
Mean	1.4	1.2	1.2	1.2
Median	1	1	1	1
Count	98	663	648	1409

3. Why did you take this course? Choose all that apply.

	Response by Course Level			
	Lower	Upper	Grad	Total
3a. The course fulfills a general education requirement.	36.4%	27.2%	25.0%	26.8%
3b. The course fulfills a requirement in my major.	60.6%	69.7%	81.8%	74.7%
3c. I have enjoyed the professor's class(es) in the past.	2.0%	3.8%	12.7%	7.7%
3d. The course will improve job/career opportunities.	34.3%	32.1%	34.9%	33.5%
3e. The course sounded interesting to me.	23.2%	11.1%	16.0%	14.1%

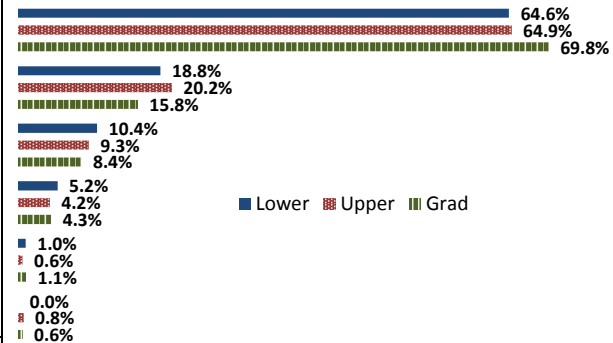
4. How would you rate the overall quality of instruction in this course?

	Response by Course Level			
	Lower	Upper	Grad	Total
Excellent (6)	58.5%	57.4%	64.4%	60.7%
Very Good (5)	24.5%	26.6%	21.5%	24.1%
Good (4)	11.7%	9.5%	7.2%	8.6%
Fair (3)	5.3%	4.5%	4.8%	4.7%
Poor (2)	0.0%	1.2%	1.2%	1.1%
Unsatisfactory (1)	0.0%	0.9%	0.9%	0.9%
Mean	5.4	5.3	5.4	5.4
Median	6	6	6	6
Count	94	673	652	1419



5. How would you rate your professor's specific contribution to you learning in this course?

	Response by Course Level			
	Lower	Upper	Grad	Total
Excellent (6)	64.6%	64.9%	69.8%	67.1%
Very Good (5)	18.8%	20.2%	15.8%	18.1%
Good (4)	10.4%	9.3%	8.4%	8.9%
Fair (3)	5.2%	4.2%	4.3%	4.3%
Poor (2)	1.0%	0.6%	1.1%	0.9%
Unsatisfactory (1)	0.0%	0.8%	0.6%	0.6%
Mean	5.4	5.4	5.5	5.4
Median	6	6	6	6
Count	96	667	646	1409



Student Opinion of Teaching Effectiveness (SOTE)- College of Natural Sciences Fall 2016 Term Summary

1. Rate your interest in the subject matter of this course before you took the class.

	Response by Course Level			
	Lower	Upper	Grad	Total
Very High (1)	21.9%	32.1%	48.2%	26.1%
High (2)	25.5%	27.4%	28.4%	26.3%
Moderately High (3)	21.3%	21.4%	12.8%	21.2%
Moderately Low (4)	12.3%	8.1%	7.1%	10.6%
Low (5)	13.0%	7.3%	2.8%	10.7%
Very Low (6)	6.1%	3.8%	0.7%	5.2%
Mean	2.9	2.4	1.9	2.7
Median	3	2	2	2
Count	6797	4361	141	11299

2. How many class sessions did you attend?

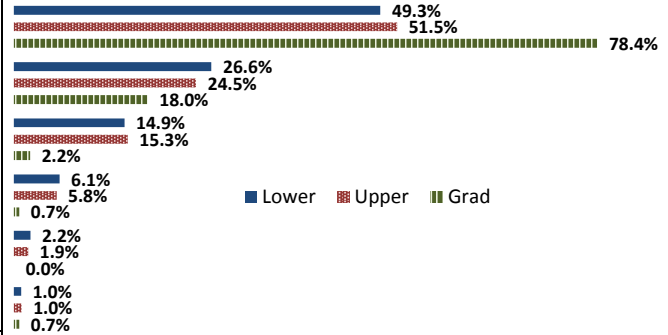
	Response by Course Level			
	Lower	Upper	Grad	Total
All (1)	68.8%	62.6%	78.9%	66.6%
Almost All (2)	28.1%	34.9%	19.0%	30.6%
More than Half (3)	2.4%	2.1%	2.1%	2.2%
Less than Half (4)	0.7%	0.4%	0.0%	0.6%
Mean	1.3	1.4	1.2	1.4
Median	1	1	1	1
Count	6774	4344	142	11260

3. Why did you take this course? Choose all that apply.

	Response by Course Level			
	Lower	Upper	Grad	Total
3a. The course fulfills a general education requirement.	59.7%	29.4%	24.5%	47.4%
3b. The course fulfills a requirement in my major.	50.7%	71.0%	67.9%	58.9%
3c. I have enjoyed the professor's class(es) in the past.	2.4%	7.8%	21.4%	4.8%
3d. The course will improve job/career opportunities.	11.2%	18.6%	25.2%	14.2%
3e. The course sounded interesting to me.	12.7%	19.4%	17.0%	15.3%

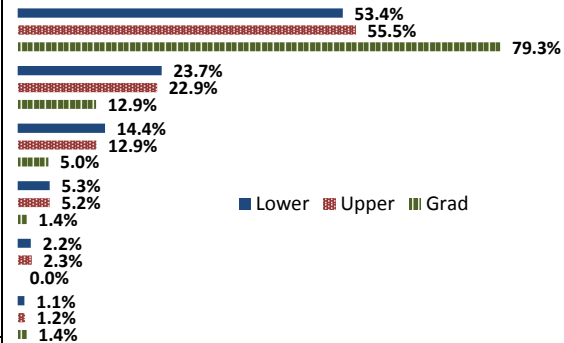
4. How would you rate the overall quality of instruction in this course?

	Response by Course Level			
	Lower	Upper	Grad	Total
Excellent (6)	49.3%	51.5%	78.4%	50.5%
Very Good (5)	26.6%	24.5%	18.0%	25.7%
Good (4)	14.9%	15.3%	2.2%	14.9%
Fair (3)	6.1%	5.8%	0.7%	5.9%
Poor (2)	2.2%	1.9%	0.0%	2.1%
Unsatisfactory (1)	1.0%	1.0%	0.7%	1.0%
Mean	5.1	5.1	5.7	5.1
Median	5	6	6	6
Count	6824	4349	139	11312



5. How would you rate your professor's specific contribution to you learning in this course?

	Response by Course Level			
	Lower	Upper	Grad	Total
Excellent (6)	53.4%	55.5%	79.3%	54.6%
Very Good (5)	23.7%	22.9%	12.9%	23.3%
Good (4)	14.4%	12.9%	5.0%	13.7%
Fair (3)	5.3%	5.2%	1.4%	5.2%
Poor (2)	2.2%	2.3%	0.0%	2.2%
Unsatisfactory (1)	1.1%	1.2%	1.4%	1.1%
Mean	5.2	5.2	5.7	5.2
Median	5	6	6	6
Count	6802	4289	140	11231



Student Opinion of Teaching Effectiveness (SOTE)- College of Social and Behavioral Sciences Fall 2016 Term Summary

1. Rate your interest in the subject matter of this course before you took the class.

	Response by Course Level			
	Lower	Upper	Grad	Total
Very High (1)	22.3%	31.4%	44.1%	28.1%
High (2)	26.5%	28.6%	23.9%	27.5%
Moderately High (3)	22.8%	19.8%	16.3%	20.9%
Moderately Low (4)	11.3%	8.8%	9.0%	9.8%
Low (5)	12.5%	8.0%	5.2%	9.7%
Very Low (6)	4.7%	3.5%	1.6%	3.9%
Mean	2.8	2.4	2.1	2.6
Median	3	2	2	2
Count	4556	5918	447	10921

2. How many class sessions did you attend?

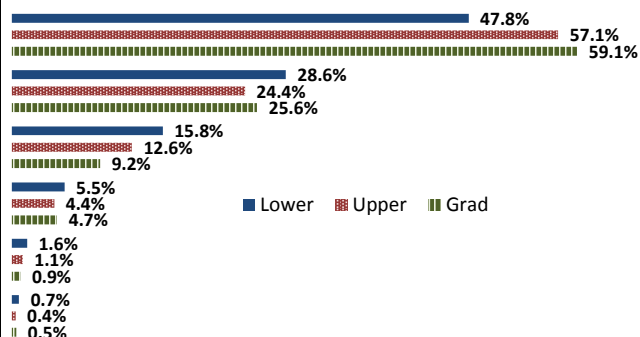
	Response by Course Level			
	Lower	Upper	Grad	Total
All (1)	54.7%	52.1%	66.7%	53.8%
Almost All (2)	41.7%	44.8%	32.4%	43.0%
More than Half (3)	3.0%	2.7%	0.7%	2.8%
Less than Half (4)	0.6%	0.4%	0.2%	0.5%
Mean	1.5	1.5	1.3	1.5
Median	1	1	1	1
Count	4515	5884	439	10838

3. Why did you take this course? Choose all that apply.

	Response by Course Level			
	Lower	Upper	Grad	Total
3a. The course fulfills a general education requirement.	72.2%	35.3%	30.3%	50.5%
3b. The course fulfills a requirement in my major.	33.5%	70.4%	84.5%	55.6%
3c. I have enjoyed the professor's class(es) in the past.	2.2%	9.3%	17.4%	6.7%
3d. The course will improve job/career opportunities.	11.0%	18.9%	34.4%	16.3%
3e. The course sounded interesting to me.	22.9%	32.8%	25.6%	28.4%

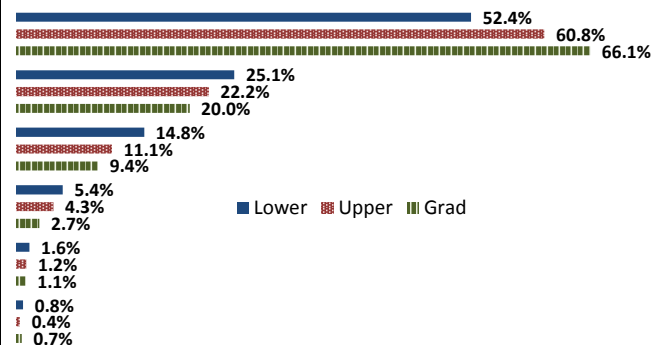
4. How would you rate the overall quality of instruction in this course?

	Response by Course Level			
	Lower	Upper	Grad	Total
Excellent (6)	47.8%	57.1%	59.1%	53.3%
Very Good (5)	28.6%	24.4%	25.6%	26.2%
Good (4)	15.8%	12.6%	9.2%	13.8%
Fair (3)	5.5%	4.4%	4.7%	4.9%
Poor (2)	1.6%	1.1%	0.9%	1.3%
Unsatisfactory (1)	0.7%	0.4%	0.5%	0.5%
Mean	5.1	5.3	5.4	5.2
Median	5	6	6	6
Count	4483	5881	445	10809



5. How would you rate your professor's specific contribution to you learning in this course?

	Response by Course Level			
	Lower	Upper	Grad	Total
Excellent (6)	52.4%	60.8%	66.1%	57.5%
Very Good (5)	25.1%	22.2%	20.0%	23.3%
Good (4)	14.8%	11.1%	9.4%	12.5%
Fair (3)	5.4%	4.3%	2.7%	4.7%
Poor (2)	1.6%	1.2%	1.1%	1.3%
Unsatisfactory (1)	0.8%	0.4%	0.7%	0.6%
Mean	5.2	5.4	5.5	5.3
Median	5	6	6	6
Count	4472	5847	445	10764



Student Opinion of Teaching Effectiveness (SOTE)- College of University Studies Fall 2016 Term Summary

1. Rate your interest in the subject matter of this course before you took the class.

	Response by Course Level			
	Lower	Upper	Grad	Total
Very High (1)	23.1%	8.3%	0.0%	22.0%
High (2)	23.7%	25.0%	0.0%	23.8%
Moderately High (3)	14.1%	25.0%	0.0%	14.9%
Moderately Low (4)	14.7%	16.7%	0.0%	14.9%
Low (5)	17.3%	16.7%	0.0%	17.3%
Very Low (6)	7.1%	8.3%	0.0%	7.1%
Mean	3.0	3.3	.	3.0
Median	3	3	.	3
Count	156	12	0	168

2. How many class sessions did you attend?

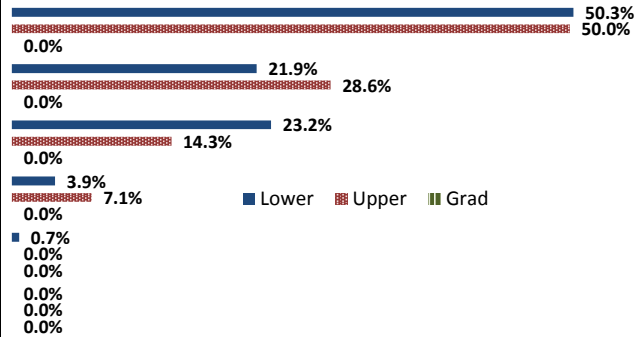
	Response by Course Level			
	Lower	Upper	Grad	Total
All (1)	55.2%	33.3%	0.0%	53.6%
Almost All (2)	38.3%	66.7%	0.0%	40.4%
More than Half (3)	5.2%	0.0%	0.0%	4.8%
Less than Half (4)	1.3%	0.0%	0.0%	1.2%
Mean	1.5	1.7	.	1.5
Median	1	2	.	1
Count	154	12	0	166

3. Why did you take this course? Choose all that apply.

	Response by Course Level			
	Lower	Upper	Grad	Total
3a. The course fulfills a general education requirement.	68.5%	85.7%	0.0%	69.9%
3b. The course fulfills a requirement in my major.	16.1%	7.1%	0.0%	15.3%
3c. I have enjoyed the professor's class(es) in the past.	4.3%	0.0%	0.0%	4.0%
3d. The course will improve job/career opportunities.	8.0%	21.4%	0.0%	9.1%
3e. The course sounded interesting to me.	3.7%	7.1%	0.0%	4.0%

4. How would you rate the overall quality of instruction in this course?

	Response by Course Level			
	Lower	Upper	Grad	Total
Excellent (6)	50.3%	50.0%	0.0%	50.3%
Very Good (5)	21.9%	28.6%	0.0%	22.5%
Good (4)	23.2%	14.3%	0.0%	22.5%
Fair (3)	3.9%	7.1%	0.0%	4.1%
Poor (2)	0.7%	0.0%	0.0%	0.6%
Unsatisfactory (1)	0.0%	0.0%	0.0%	0.0%
Mean	5.2	5.2	.	5.2
Median	6	6	.	6
Count	155	14	0	169



5. How would you rate your professor's specific contribution to you learning in this course?

	Response by Course Level			
	Lower	Upper	Grad	Total
Excellent (6)	52.4%	69.2%	0.0%	53.8%
Very Good (5)	21.8%	15.4%	0.0%	21.3%
Good (4)	18.4%	7.7%	0.0%	17.5%
Fair (3)	6.1%	0.0%	0.0%	5.6%
Poor (2)	1.4%	7.7%	0.0%	1.9%
Unsatisfactory (1)	0.0%	0.0%	0.0%	0.0%
Mean	5.2	5.4	.	5.2
Median	6	6	.	6
Count	147	13	0	160

