

## Student Opinion of Teaching Effectiveness (SOTE)- College of Arts & Letters Winter 2015 Term Summary

### 1. Rate your interest in the subject matter of this course before you took the class.

	Response by Course Level			
	Lower	Upper	Grad	Total
Very High (1)	24.2%	34.5%	62.6%	28.8%
High (2)	26.8%	24.4%	23.2%	25.9%
Moderately High (3)	23.8%	21.1%	9.5%	22.5%
Moderately Low (4)	11.2%	10.0%	3.2%	10.6%
Low (5)	9.6%	7.1%	1.1%	8.5%
Very Low (6)	4.3%	2.9%	0.5%	3.7%
Mean	2.7	2.4	1.6	2.6
Median	2	2	1	2
Count	5509	3269	190	8968

### 2. How many class sessions did you attend?

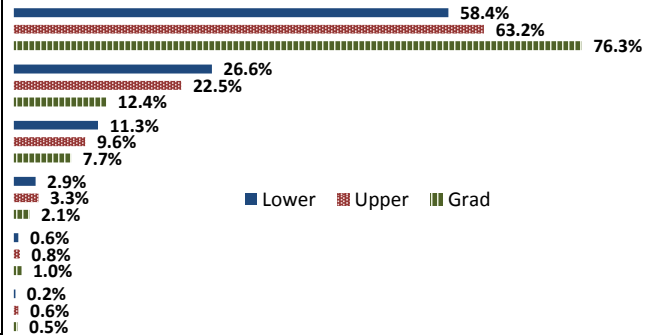
	Response by Course Level			
	Lower	Upper	Grad	Total
All (1)	51.7%	49.8%	44.2%	50.9%
Almost All (2)	44.8%	47.1%	54.7%	45.8%
More than Half (3)	3.1%	2.7%	0.0%	2.9%
Less than Half (4)	0.4%	0.4%	1.1%	0.4%
Mean	1.5	1.5	1.6	1.5
Median	1	2	2	1
Count	5498	3239	190	8927

### 3. Why did you take this course? Choose all that apply.

	Response by Course Level			
	Lower	Upper	Grad	Total
3a. The course fulfills a general education requirement.	73.0%	41.1%	31.7%	60.6%
3b. The course fulfills a requirement in my major.	22.6%	60.6%	79.4%	37.5%
3c. I have enjoyed the professor's class(es) in the past.	6.9%	14.5%	44.2%	10.5%
3d. The course will improve job/career opportunities.	14.6%	22.4%	36.2%	17.8%
3e. The course sounded interesting to me.	22.3%	34.4%	48.7%	27.2%

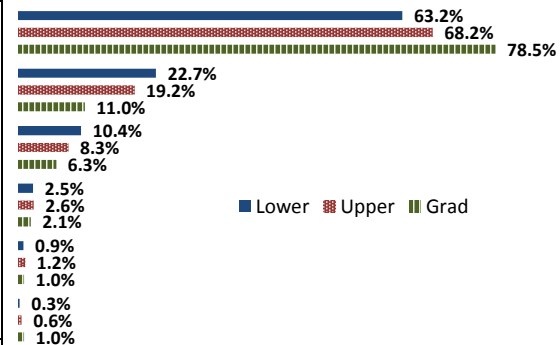
### 4. How would you rate the overall quality of instruction in this course?

	Response by Course Level			
	Lower	Upper	Grad	Total
Excellent (6)	58.4%	63.2%	76.3%	60.5%
Very Good (5)	26.6%	22.5%	12.4%	24.8%
Good (4)	11.3%	9.6%	7.7%	10.6%
Fair (3)	2.9%	3.3%	2.1%	3.0%
Poor (2)	0.6%	0.8%	1.0%	0.7%
Unsatisfactory (1)	0.2%	0.6%	0.5%	0.3%
Mean	5.4	5.4	5.6	5.4
Median	6	6	6	6
Count	5535	3255	194	8984



### 5. How would you rate your professor's specific contribution to you learning in this course?

	Response by Course Level			
	Lower	Upper	Grad	Total
Excellent (6)	63.2%	68.2%	78.5%	65.4%
Very Good (5)	22.7%	19.2%	11.0%	21.2%
Good (4)	10.4%	8.3%	6.3%	9.6%
Fair (3)	2.5%	2.6%	2.1%	2.5%
Poor (2)	0.9%	1.2%	1.0%	1.0%
Unsatisfactory (1)	0.3%	0.6%	1.0%	0.4%
Mean	5.4	5.5	5.6	5.5
Median	6	6	6	6
Count	5469	3253	191	8913



# Student Opinion of Teaching Effectiveness (SOTE)- College of Business and Public Administration Winter 2015 Term Summary

## 1. Rate your interest in the subject matter of this course before you took the class.

	Response by Course Level			
	Lower	Upper	Grad	Total
Very High (1)	16.6%	29.2%	27.6%	26.3%
High (2)	24.2%	27.6%	29.5%	27.1%
Moderately High (3)	25.9%	21.9%	20.9%	22.6%
Moderately Low (4)	12.6%	10.0%	11.6%	10.7%
Low (5)	13.0%	8.1%	5.7%	8.8%
Very Low (6)	7.8%	3.3%	4.7%	4.4%
Mean	3.0	2.5	2.5	2.6
Median	3	2	2	2
Count	915	2801	597	4313

## 2. How many class sessions did you attend?

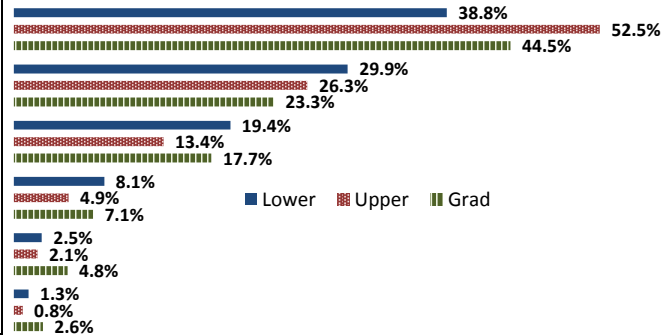
	Response by Course Level			
	Lower	Upper	Grad	Total
All (1)	55.6%	57.8%	70.7%	59.1%
Almost All (2)	40.7%	39.6%	26.3%	38.0%
More than Half (3)	2.5%	2.2%	1.9%	2.2%
Less than Half (4)	1.2%	0.4%	1.2%	0.7%
Mean	1.5	1.5	1.3	1.4
Median	1	1	1	1
Count	909	2798	593	4300

## 3. Why did you take this course? Choose all that apply.

	Response by Course Level			
	Lower	Upper	Grad	Total
3a. The course fulfills a general education requirement.	36.2%	25.5%	35.4%	29.1%
3b. The course fulfills a requirement in my major.	68.4%	77.7%	69.6%	74.6%
3c. I have enjoyed the professor's class(es) in the past.	2.8%	7.9%	7.6%	6.7%
3d. The course will improve job/career opportunities.	19.3%	25.5%	26.2%	24.3%
3e. The course sounded interesting to me.	13.0%	17.6%	13.7%	16.1%

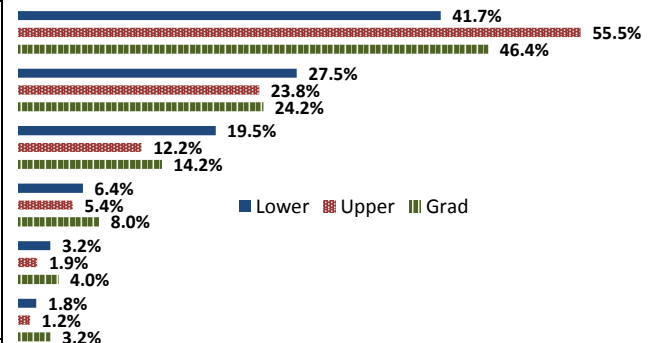
## 4. How would you rate the overall quality of instruction in this course?

	Response by Course Level			
	Lower	Upper	Grad	Total
Excellent (6)	38.8%	52.5%	44.5%	48.5%
Very Good (5)	29.9%	26.3%	23.3%	26.7%
Good (4)	19.4%	13.4%	17.7%	15.3%
Fair (3)	8.1%	4.9%	7.1%	5.9%
Poor (2)	2.5%	2.1%	4.8%	2.5%
Unsatisfactory (1)	1.3%	0.8%	2.6%	1.2%
Mean	4.9	5.2	4.9	5.1
Median	5	6	5	5
Count	921	2814	605	4340



## 5. How would you rate your professor's specific contribution to you learning in this course?

	Response by Course Level			
	Lower	Upper	Grad	Total
Excellent (6)	41.7%	55.5%	46.4%	51.4%
Very Good (5)	27.5%	23.8%	24.2%	24.6%
Good (4)	19.5%	12.2%	14.2%	14.0%
Fair (3)	6.4%	5.4%	8.0%	6.0%
Poor (2)	3.2%	1.9%	4.0%	2.5%
Unsatisfactory (1)	1.8%	1.2%	3.2%	1.6%
Mean	4.9	5.2	4.9	5.1
Median	5	6	5	6
Count	907	2817	599	4323



## Student Opinion of Teaching Effectiveness (SOTE)- College of Education Winter 2015 Term Summary

### 1. Rate your interest in the subject matter of this course before you took the class.

	Response by Course Level			
	Lower	Upper	Grad	Total
Very High (1)	42.7%	38.9%	45.9%	43.2%
High (2)	27.0%	29.2%	26.9%	27.7%
Moderately High (3)	19.1%	20.8%	16.7%	18.3%
Moderately Low (4)	4.5%	5.3%	5.6%	5.4%
Low (5)	5.6%	4.2%	3.7%	4.0%
Very Low (6)	1.1%	1.5%	1.3%	1.4%
Mean	2.1	2.1	2.0	2.0
Median	2	2	2	2
Count	89	524	844	1457

### 2. How many class sessions did you attend?

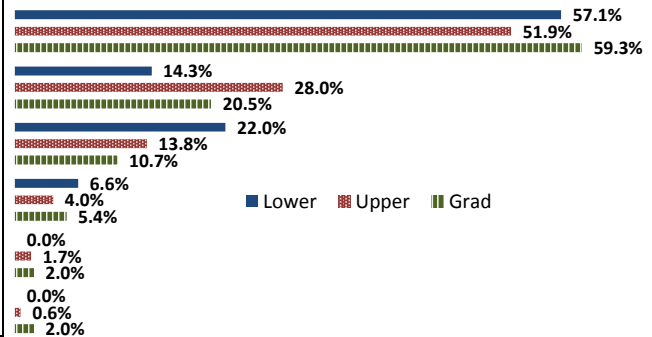
	Response by Course Level			
	Lower	Upper	Grad	Total
All (1)	72.7%	71.7%	78.3%	75.6%
Almost All (2)	27.3%	27.6%	21.1%	23.8%
More than Half (3)	0.0%	0.6%	0.1%	0.3%
Less than Half (4)	0.0%	0.2%	0.5%	0.4%
Mean	1.3	1.3	1.2	1.3
Median	1	1	1	1
Count	88	519	821	1428

### 3. Why did you take this course? Choose all that apply.

	Response by Course Level			
	Lower	Upper	Grad	Total
3a. The course fulfills a general education requirement.	38.3%	19.8%	24.8%	23.8%
3b. The course fulfills a requirement in my major.	48.9%	72.7%	80.2%	75.5%
3c. I have enjoyed the professor's class(es) in the past.	6.4%	6.6%	12.0%	9.7%
3d. The course will improve job/career opportunities.	28.7%	33.4%	27.8%	29.9%
3e. The course sounded interesting to me.	35.1%	13.8%	12.1%	14.1%

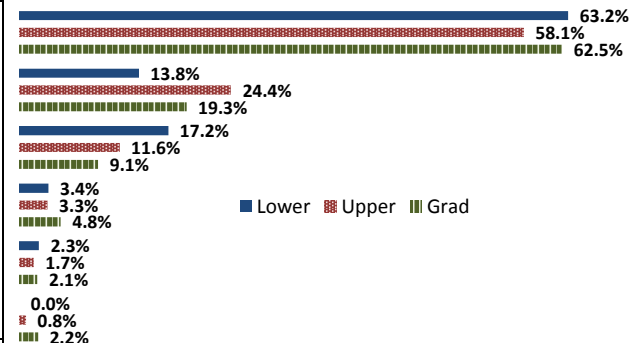
### 4. How would you rate the overall quality of instruction in this course?

	Response by Course Level			
	Lower	Upper	Grad	Total
Excellent (6)	57.1%	51.9%	59.3%	56.5%
Very Good (5)	14.3%	28.0%	20.5%	22.8%
Good (4)	22.0%	13.8%	10.7%	12.5%
Fair (3)	6.6%	4.0%	5.4%	5.0%
Poor (2)	0.0%	1.7%	2.0%	1.8%
Unsatisfactory (1)	0.0%	0.6%	2.0%	1.4%
Mean	5.2	5.2	5.2	5.2
Median	6	6	6	6
Count	91	522	847	1460



### 5. How would you rate your professor's specific contribution to you learning in this course?

	Response by Course Level			
	Lower	Upper	Grad	Total
Excellent (6)	63.2%	58.1%	62.5%	61.0%
Very Good (5)	13.8%	24.4%	19.3%	20.8%
Good (4)	17.2%	11.6%	9.1%	10.5%
Fair (3)	3.4%	3.3%	4.8%	4.2%
Poor (2)	2.3%	1.7%	2.1%	2.0%
Unsatisfactory (1)	0.0%	0.8%	2.2%	1.5%
Mean	5.3	5.3	5.3	5.3
Median	6	6	6	6
Count	87	516	825	1428



## Student Opinion of Teaching Effectiveness (SOTE)- College of Natural Sciences Winter 2015 Term Summary

### 1. Rate your interest in the subject matter of this course before you took the class.

	Response by Course Level			
	Lower	Upper	Grad	Total
Very High (1)	26.5%	36.3%	41.1%	30.1%
High (2)	25.8%	26.9%	32.9%	26.3%
Moderately High (3)	20.5%	18.6%	12.3%	19.7%
Moderately Low (4)	10.2%	9.1%	8.2%	9.8%
Low (5)	10.5%	5.9%	2.7%	8.9%
Very Low (6)	6.4%	3.2%	2.7%	5.3%
Mean	2.7	2.3	2.1	2.6
Median	2	2	2	2
Count	6908	3630	146	10684

### 2. How many class sessions did you attend?

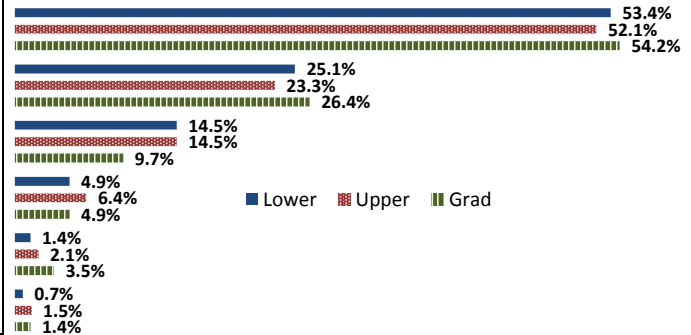
	Response by Course Level			
	Lower	Upper	Grad	Total
All (1)	65.9%	63.9%	71.1%	65.3%
Almost All (2)	31.6%	34.2%	27.5%	32.5%
More than Half (3)	2.1%	1.7%	0.7%	2.0%
Less than Half (4)	0.3%	0.2%	0.7%	0.3%
Mean	1.4	1.4	1.3	1.4
Median	1	1	1	1
Count	6891	3586	142	10619

### 3. Why did you take this course? Choose all that apply.

	Response by Course Level			
	Lower	Upper	Grad	Total
3a. The course fulfills a general education requirement.	53.5%	22.7%	29.4%	42.9%
3b. The course fulfills a requirement in my major.	48.4%	80.7%	73.9%	59.5%
3c. I have enjoyed the professor's class(es) in the past.	4.1%	12.7%	22.9%	7.2%
3d. The course will improve job/career opportunities.	12.0%	22.0%	22.9%	15.5%
3e. The course sounded interesting to me.	16.9%	19.3%	31.4%	17.9%

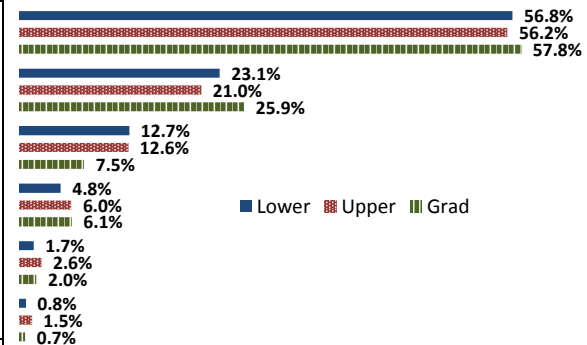
### 4. How would you rate the overall quality of instruction in this course?

	Response by Course Level			
	Lower	Upper	Grad	Total
Excellent (6)	53.4%	52.1%	54.2%	53.0%
Very Good (5)	25.1%	23.3%	26.4%	24.5%
Good (4)	14.5%	14.5%	9.7%	14.4%
Fair (3)	4.9%	6.4%	4.9%	5.4%
Poor (2)	1.4%	2.1%	3.5%	1.7%
Unsatisfactory (1)	0.7%	1.5%	1.4%	1.0%
Mean	5.2	5.1	5.2	5.2
Median	6	6	6	6
Count	6925	3628	144	10697



### 5. How would you rate your professor's specific contribution to you learning in this course?

	Response by Course Level			
	Lower	Upper	Grad	Total
Excellent (6)	56.8%	56.2%	57.8%	56.6%
Very Good (5)	23.1%	21.0%	25.9%	22.4%
Good (4)	12.7%	12.6%	7.5%	12.6%
Fair (3)	4.8%	6.0%	6.1%	5.3%
Poor (2)	1.7%	2.6%	2.0%	2.0%
Unsatisfactory (1)	0.8%	1.5%	0.7%	1.1%
Mean	5.3	5.2	5.3	5.2
Median	6	6	6	6
Count	6951	3620	147	10718



# Student Opinion of Teaching Effectiveness (SOTE)- College of Social and Behavioral Sciences Winter 2015 Term Summary

## 1. Rate your interest in the subject matter of this course before you took the class.

	Response by Course Level			
	Lower	Upper	Grad	Total
Very High (1)	21.4%	31.5%	41.0%	28.0%
High (2)	25.0%	27.8%	26.2%	26.6%
Moderately High (3)	23.2%	19.9%	19.9%	21.3%
Moderately Low (4)	13.2%	8.8%	5.3%	10.4%
Low (5)	11.8%	7.5%	5.0%	9.1%
Very Low (6)	5.3%	4.4%	2.6%	4.7%
Mean	2.8	2.5	2.1	2.6
Median	3	2	2	2
Count	4113	5458	583	10154

## 2. How many class sessions did you attend?

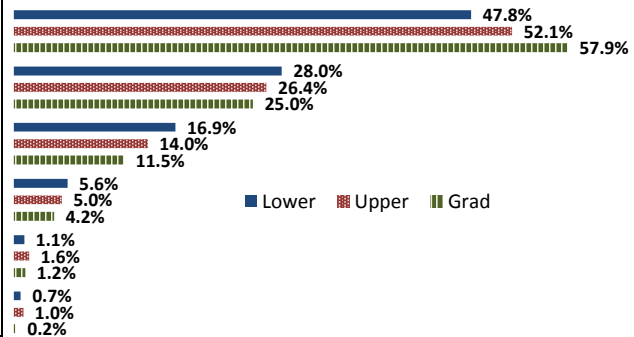
	Response by Course Level			
	Lower	Upper	Grad	Total
All (1)	53.3%	55.0%	59.0%	54.5%
Almost All (2)	42.3%	41.9%	39.1%	41.9%
More than Half (3)	3.6%	2.7%	1.4%	3.0%
Less than Half (4)	0.8%	0.5%	0.5%	0.6%
Mean	1.5	1.5	1.4	1.5
Median	1	1	1	1
Count	4093	5453	586	10132

## 3. Why did you take this course? Choose all that apply.

	Response by Course Level			
	Lower	Upper	Grad	Total
3a. The course fulfills a general education requirement.	69.6%	31.7%	32.8%	47.1%
3b. The course fulfills a requirement in my major.	33.3%	70.9%	79.4%	56.2%
3c. I have enjoyed the professor's class(es) in the past.	2.6%	12.7%	17.7%	8.9%
3d. The course will improve job/career opportunities.	10.4%	20.6%	28.2%	16.9%
3e. The course sounded interesting to me.	20.6%	33.9%	18.3%	27.6%

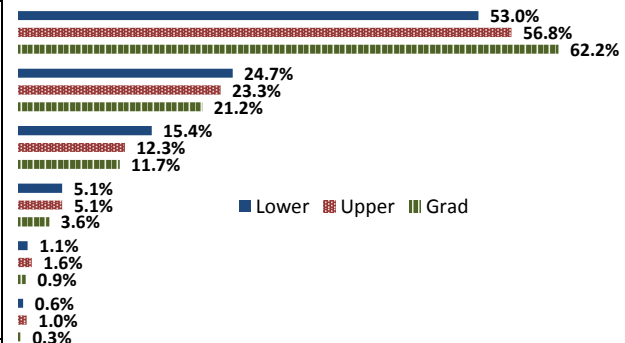
## 4. How would you rate the overall quality of instruction in this course?

	Response by Course Level			
	Lower	Upper	Grad	Total
Excellent (6)	47.8%	52.1%	57.9%	50.7%
Very Good (5)	28.0%	26.4%	25.0%	26.9%
Good (4)	16.9%	14.0%	11.5%	15.0%
Fair (3)	5.6%	5.0%	4.2%	5.2%
Poor (2)	1.1%	1.6%	1.2%	1.3%
Unsatisfactory (1)	0.7%	1.0%	0.2%	0.8%
Mean	5.1	5.2	5.3	5.2
Median	5	6	6	6
Count	4105	5490	592	10187



## 5. How would you rate your professor's specific contribution to you learning in this course?

	Response by Course Level			
	Lower	Upper	Grad	Total
Excellent (6)	53.0%	56.8%	62.2%	55.6%
Very Good (5)	24.7%	23.3%	21.2%	23.7%
Good (4)	15.4%	12.3%	11.7%	13.5%
Fair (3)	5.1%	5.1%	3.6%	5.0%
Poor (2)	1.1%	1.6%	0.9%	1.4%
Unsatisfactory (1)	0.6%	1.0%	0.3%	0.8%
Mean	5.2	5.3	5.4	5.2
Median	6	6	6	6
Count	4080	5400	580	10060



## Student Opinion of Teaching Effectiveness (SOTE)- College of University Studies Winter 2015 Term Summary

### 1. Rate your interest in the subject matter of this course before you took the class.

	Response by Course Level			
	Lower	Upper	Grad	Total
Very High (1)	24.6%	0.0%	0.0%	24.6%
High (2)	27.3%	0.0%	0.0%	27.3%
Moderately High (3)	19.1%	0.0%	0.0%	19.1%
Moderately Low (4)	9.2%	0.0%	0.0%	9.2%
Low (5)	14.4%	0.0%	0.0%	14.4%
Very Low (6)	5.5%	0.0%	0.0%	5.5%
Mean	2.8	N/A	N/A	2.8
Median	2	N/A	N/A	2
Count	403	0	0	403

### 2. How many class sessions did you attend?

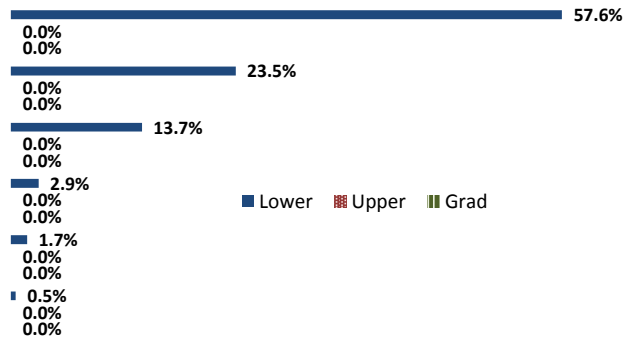
	Response by Course Level			
	Lower	Upper	Grad	Total
All (1)	46.9%	0.0%	0.0%	46.9%
Almost All (2)	49.6%	0.0%	0.0%	49.6%
More than Half (3)	3.3%	0.0%	0.0%	3.3%
Less than Half (4)	0.3%	0.0%	0.0%	0.3%
Mean	1.6	N/A	N/A	1.6
Median	2	N/A	N/A	2
Count	399	0	0	399

### 3. Why did you take this course? Choose all that apply.

	Response by Course Level			
	Lower	Upper	Grad	Total
3a. The course fulfills a general education requirement.	40.6%	0.0%	0.0%	40.6%
3b. The course fulfills a requirement in my major.	16.3%	0.0%	0.0%	16.3%
3c. I have enjoyed the professor's class(es) in the past.	3.0%	0.0%	0.0%	3.0%
3d. The course will improve job/career opportunities.	11.9%	0.0%	0.0%	11.9%
3e. The course sounded interesting to me.	15.9%	0.0%	0.0%	15.9%

### 4. How would you rate the overall quality of instruction in this course?

	Response by Course Level			
	Lower	Upper	Grad	Total
Excellent (6)	57.6%	0.0%	0.0%	57.6%
Very Good (5)	23.5%	0.0%	0.0%	23.5%
Good (4)	13.7%	0.0%	0.0%	13.7%
Fair (3)	2.9%	0.0%	0.0%	2.9%
Poor (2)	1.7%	0.0%	0.0%	1.7%
Unsatisfactory (1)	0.5%	0.0%	0.0%	0.5%
Mean	5.3	N/A	N/A	5.3
Median	6	N/A	N/A	6
Count	408	0	0	408



### 5. How would you rate your professor's specific contribution to you learning in this course?

	Response by Course Level			
	Lower	Upper	Grad	Total
Excellent (6)	65.7%	0.0%	0.0%	65.7%
Very Good (5)	17.3%	0.0%	0.0%	17.3%
Good (4)	11.4%	0.0%	0.0%	11.4%
Fair (3)	3.7%	0.0%	0.0%	3.7%
Poor (2)	1.7%	0.0%	0.0%	1.7%
Unsatisfactory (1)	0.2%	0.0%	0.0%	0.2%
Mean	5.4	N/A	N/A	5.4
Median	6	N/A	N/A	6
Count	405	0	0	405

