

Student Opinion of Teaching Effectiveness (SOTE)- College of Arts & Letters Spring 2014 Term Summary

1. Rate your interest in the subject matter of this course before you took the class.

	Response by Course Level			
	Lower	Upper	Grad	Total
Very High (1)	25%	37%	71%	31%
High (2)	26%	24%	17%	25%
Moderately High (3)	23%	19%	9%	21%
Moderately Low (4)	11%	9%	0.8%	10%
Low (5)	10%	7%	2%	9%
Very Low (6)	5%	4%	0.0%	5%
Mean	2.7	2.4	1.5	2.6
Median	2	2	1	2
Count	4571	3170	135	7876

2. How many class sessions did you attend?

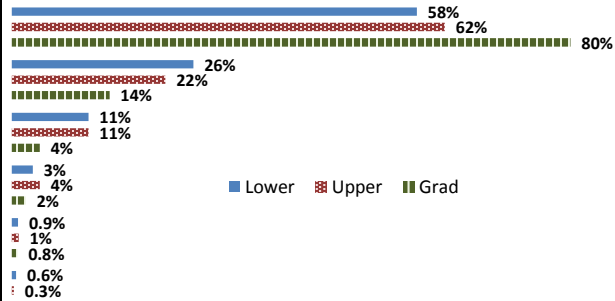
	Response by Course Level			
	Lower	Upper	Grad	Total
All (1)	49%	45%	39%	47%
Almost All (2)	46%	50%	60%	48%
More than Half (3)	4%	5%	0.8%	4%
Less than Half (4)	0.6%	0.4%	0.8%	0.5%
Mean	1.6	1.6	1.6	1.6
Median	2	2	2	2
Count	4571	3170	135	7876

3. Why did you take this course? Choose all that apply.

	Response by Course Level			
	Lower	Upper	Grad	Total
3a. The course fulfills a general education requirement.	73%	38%	33%	58%
3b. The course fulfills a requirement in my major.	24%	58%	75%	39%
3c. I have enjoyed the professor's class(es) in the past.	8%	19%	46%	13%
3d. The course will improve job/career opportunities.	16%	21%	47%	18%
3e. The course sounded interesting to me.	24%	35%	56%	29%

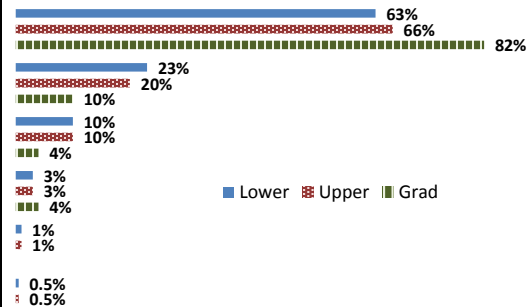
4. How would you rate the overall quality of instruction in this course?

	Response by Course Level			
	Lower	Upper	Grad	Total
Excellent (6)	58%	62%	80%	60%
Very Good (5)	26%	22%	14%	24%
Good (4)	11%	11%	4%	11%
Fair (3)	3%	4%	2%	3%
Poor (2)	0.9%	1%	0.8%	1.0%
Unsatisfactory (1)	0.6%	0.3%	0.0%	0.5%
Mean	5.4	5.4	5.7	5.4
Median	6	6	6	6
Count	4571	3170	135	7876



5. How would you rate your professor's specific contribution to you learning in this course?

	Response by Course Level			
	Lower	Upper	Grad	Total
Excellent (6)	63%	66%	82%	65%
Very Good (5)	23%	20%	10%	21%
Good (4)	10%	10%	4%	10%
Fair (3)	3%	3%	4%	3%
Poor (2)	1%	1%	0.0%	1%
Unsatisfactory (1)	0.5%	0.5%	0.0%	0.5%
Mean	5.4	5.4	5.7	5.4
Median	6	6	6	6
Count	4571	3170	135	7876



Student Opinion of Teaching Effectiveness (SOTE)- College of Business & Public Administration Spring 2014 Term Summary

1. Rate your interest in the subject matter of this course before you took the class.

	Response by Course Level			
	Lower	Upper	Grad	Total
Very High (1)	20%	28%	25%	26%
High (2)	22%	28%	32%	27%
Moderately High (3)	24%	21%	24%	22%
Moderately Low (4)	13%	11%	10%	11%
Low (5)	13%	8%	6%	9%
Very Low (6)	9%	4%	4%	5%
Mean	3.0	2.6	2.5	2.7
Median	3	2	2	2
Count	1019	3113	579	4711

2. How many class sessions did you attend?

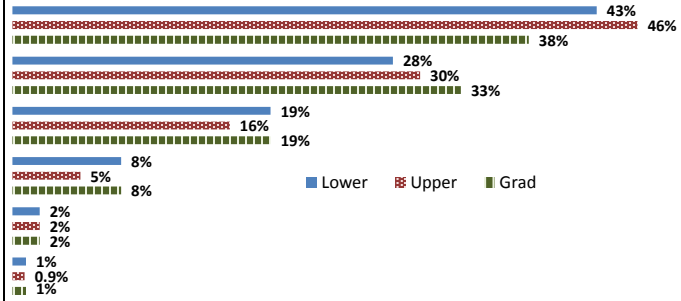
	Response by Course Level			
	Lower	Upper	Grad	Total
All (1)	57%	53%	71%	56%
Almost All (2)	39%	44%	27%	40%
More than Half (3)	4%	3%	1%	3%
Less than Half (4)	0.5%	0.5%	0.7%	0.5%
Mean	1.5	1.5	1.3	1.5
Median	1	1	1	1
Count	1019	3113	579	4711

3. Why did you take this course? Choose all that apply.

	Response by Course Level			
	Lower	Upper	Grad	Total
3a. The course fulfills a general education requirement.	36%	27%	32%	29%
3b. The course fulfills a requirement in my major.	67%	77%	78%	75%
3c. I have enjoyed the professor's class(es) in the past.	3%	8%	8%	7%
3d. The course will improve job/career opportunities.	16%	25%	23%	23%
3e. The course sounded interesting to me.	9%	16%	13%	14%

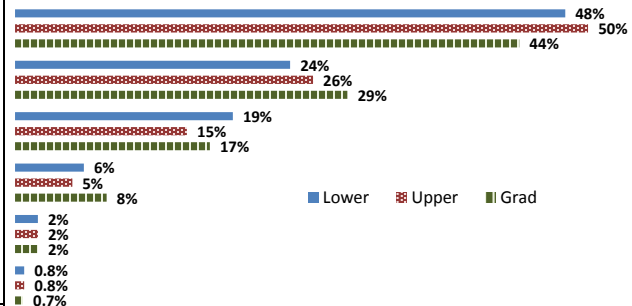
4. How would you rate the overall quality of instruction in this course?

	Response by Course Level			
	Lower	Upper	Grad	Total
Excellent (6)	43%	46%	38%	44%
Very Good (5)	28%	30%	33%	30%
Good (4)	19%	16%	19%	17%
Fair (3)	8%	5%	8%	6%
Poor (2)	2%	2%	2%	2%
Unsatisfactory (1)	1%	0.9%	1%	1%
Mean	5.0	5.1	4.9	5.1
Median	5	5	5	5
Count	1019	3113	579	4711



5. How would you rate your professor's specific contribution to your learning in this course?

	Response by Course Level			
	Lower	Upper	Grad	Total
Excellent (6)	48%	50%	44%	49%
Very Good (5)	24%	26%	29%	26%
Good (4)	19%	15%	17%	16%
Fair (3)	6%	5%	8%	6%
Poor (2)	2%	2%	2%	2%
Unsatisfactory (1)	0.8%	0.8%	0.7%	0.8%
Mean	5.1	5.1	5.0	5.1
Median	5	6	5	5
Count	1019	3113	579	4711



Student Opinion of Teaching Effectiveness (SOTE)- College of Education Spring 2014 Term Summary

1. Rate your interest in the subject matter of this course before you took the class.

	Response by Course Level		
	Upper	Grad	Total
Very High (1)	41%	29%	35%
High (2)	24%	33%	28%
Moderately High (3)	19%	30%	25%
Moderately Low (4)	7%	6%	7%
Low (5)	7%	1%	4%
Very Low (6)	2%	1%	1%
Mean	2.2	2.2	2.2
Median	2	2	2
Count	68	70	138

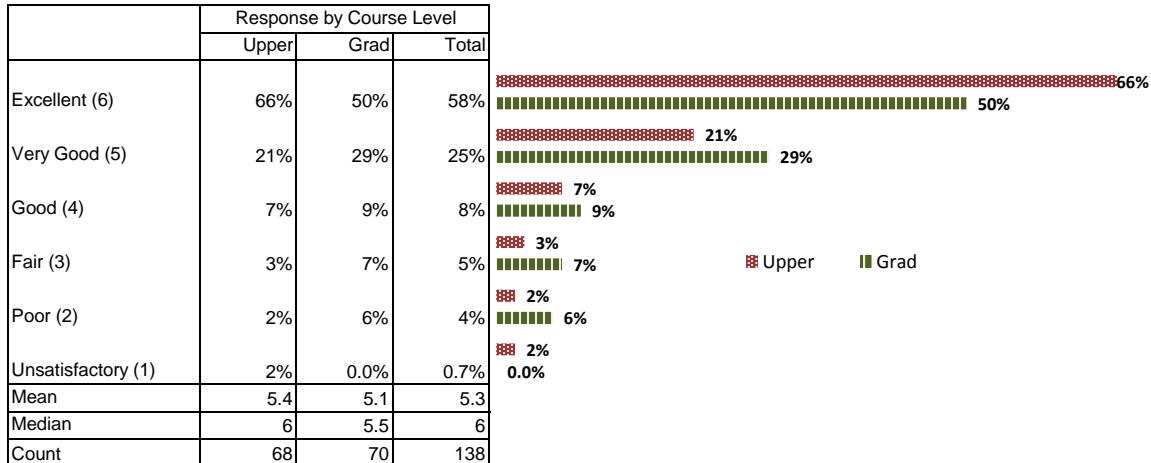
2. How many class sessions did you attend?

	Response by Course Level		
	Upper	Grad	Total
All (1)	92%	97%	95%
Almost All (2)	5%	3%	4%
More than Half (3)	2%	0.0%	0.8%
Less than Half (4)	2%	0.0%	0.8%
Mean	1.1	1.0	1.1
Median	1	1	1
Count	68	70	138

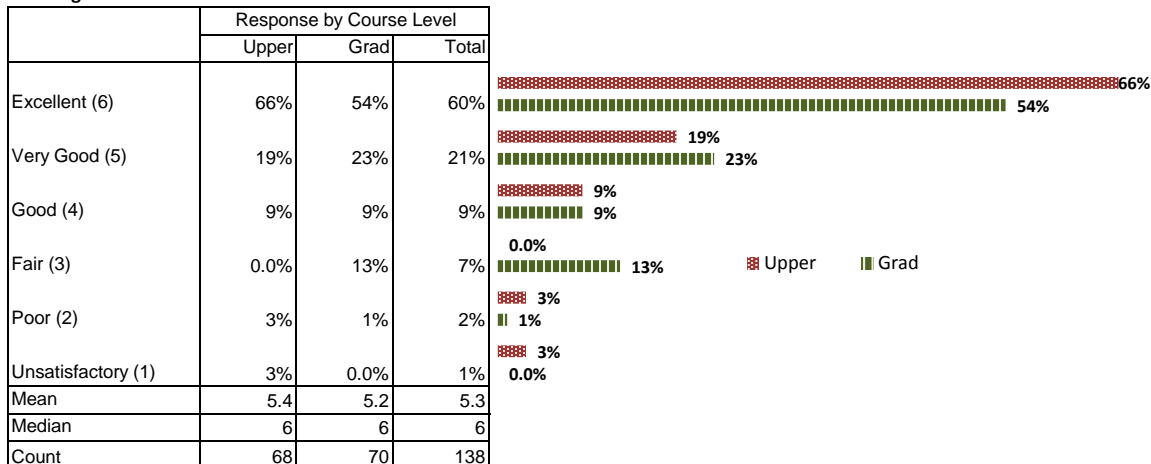
3. Why did you take this course? Choose all that apply.

	Response by Course Level		
	Upper	Grad	Total
3a. The course fulfills a general education requirement.	19%	14%	17%
3b. The course fulfills a requirement in my major.	65%	87%	76%
3c. I have enjoyed the professor's class(es) in the past.	10%	24%	17%
3d. The course will improve job/career opportunities.	38%	33%	36%
3e. The course sounded interesting to me.	25%	10%	17%

4. How would you rate the overall quality of instruction in this course?



5. How would you rate your professor's specific contribution to you learning in this course?



Student Opinion of Teaching Effectiveness (SOTE)- College of Natural Sciences Spring 2014 Term Summary

1. Rate your interest in the subject matter of this course before you took the class.

	Response by Course Level			
	Lower	Upper	Grad	Total
Very High (1)	26%	35%	33%	29%
High (2)	26%	28%	33%	27%
Moderately High (3)	20%	19%	21%	20%
Moderately Low (4)	10%	8%	3%	9%
Low (5)	11%	6%	6%	9%
Very Low (6)	7%	4%	3%	6%
Mean	2.7	2.3	2.2	2.6
Median	2	2	2	2
Count	6871	3984	183	11038

2. How many class sessions did you attend?

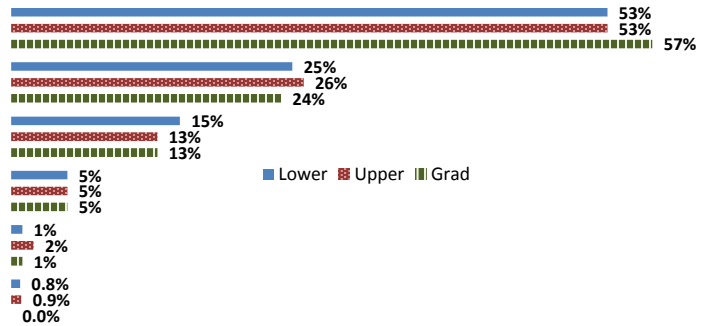
	Response by Course Level			
	Lower	Upper	Grad	Total
All (1)	63%	62%	80%	63%
Almost All (2)	34%	35%	19%	34%
More than Half (3)	2%	3%	1%	2%
Less than Half (4)	0.7%	0.5%	0.0%	0.6%
Mean	1.4	1.4	1.2	1.4
Median	1	1	1	1
Count	6871	3984	183	11038

3. Why did you take this course? Choose all that apply.

	Response by Course Level			
	Lower	Upper	Grad	Total
3a. The course fulfills a general education requirement.	50%	25%	24%	41%
3b. The course fulfills a requirement in my major.	48%	74%	79%	58%
3c. I have enjoyed the professor's class(es) in the past.	7%	13%	18%	9%
3d. The course will improve job/career opportunities.	11%	22%	25%	15%
3e. The course sounded interesting to me.	17%	21%	24%	18%

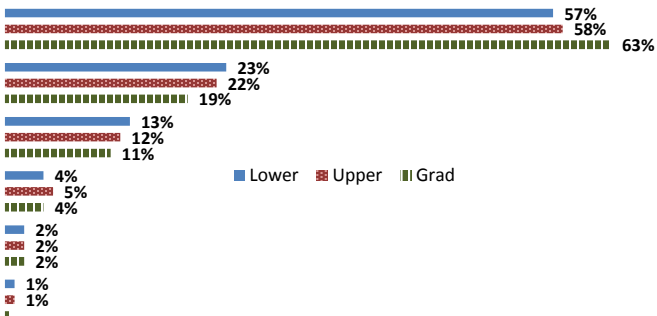
4. How would you rate the overall quality of instruction in this course?

	Response by Course Level			
	Lower	Upper	Grad	Total
Excellent (6)	53%	53%	57%	53%
Very Good (5)	25%	26%	24%	25%
Good (4)	15%	13%	13%	14%
Fair (3)	5%	5%	5%	5%
Poor (2)	1%	2%	1%	1%
Unsatisfactory (1)	0.8%	0.9%	0.0%	0.8%
Mean	5.2	5.2	5.3	5.2
Median	6	6	6	6
Count	6871	3984	183	11038



5. How would you rate your professor's specific contribution to you learning in this course?

	Response by Course Level			
	Lower	Upper	Grad	Total
Excellent (6)	57%	58%	63%	58%
Very Good (5)	23%	22%	19%	23%
Good (4)	13%	12%	11%	12%
Fair (3)	4%	5%	4%	5%
Poor (2)	2%	2%	2%	2%
Unsatisfactory (1)	1%	1%	0.6%	1%
Mean	5.3	5.3	5.4	5.3
Median	6	6	6	6
Count	6871	3984	183	11038



Student Opinion of Teaching Effectiveness (SOTE)- College of Social & Behavioral Sciences Spring 2014 Term Summary

1. Rate your interest in the subject matter of this course before you took the class.

	Response by Course Level			
	Lower	Upper	Grad	Total
Very High (1)	22%	33%	44%	29%
High (2)	25%	27%	28%	26%
Moderately High (3)	24%	20%	15%	21%
Moderately Low (4)	12%	9%	5%	10%
Low (5)	12%	7%	5%	9%
Very Low (6)	6%	4%	2%	5%
Mean	2.8	2.4	2.1	2.6
Median	3	2	2	2
Count	3619	5283	551	9453

2. How many class sessions did you attend?

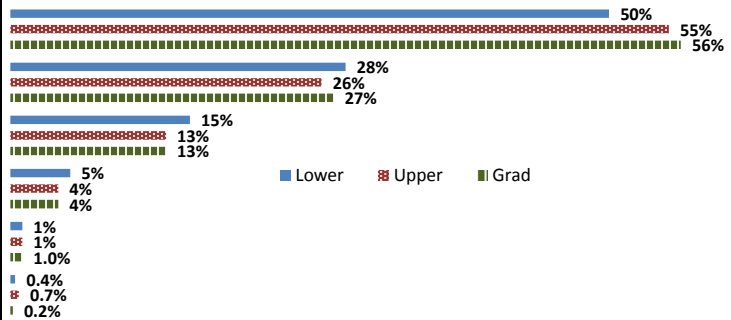
	Response by Course Level			
	Lower	Upper	Grad	Total
All (1)	49%	50%	63%	50%
Almost All (2)	45%	46%	36%	45%
More than Half (3)	4%	3%	0.6%	4%
Less than Half (4)	1%	0.5%	0.0%	0.8%
Mean	1.6	1.5	1.4	1.6
Median	2	1	1	1
Count	3619	5283	551	9453

3. Why did you take this course? Choose all that apply.

	Response by Course Level			
	Lower	Upper	Grad	Total
3a. The course fulfills a general education requirement.	67%	34%	30%	46%
3b. The course fulfills a requirement in my major.	31%	66%	77%	54%
3c. I have enjoyed the professor's class(es) in the past.	4%	14%	20%	11%
3d. The course will improve job/career opportunities.	12%	20%	28%	17%
3e. The course sounded interesting to me.	23%	34%	23%	29%

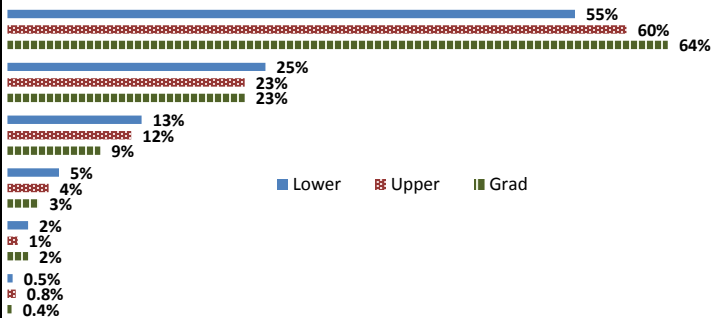
4. How would you rate the overall quality of instruction in this course?

	Response by Course Level			
	Lower	Upper	Grad	Total
Excellent (6)	50%	55%	56%	53%
Very Good (5)	28%	26%	27%	27%
Good (4)	15%	13%	13%	14%
Fair (3)	5%	4%	4%	4%
Poor (2)	1%	1%	1.0%	1%
Unsatisfactory (1)	0.4%	0.7%	0.2%	0.5%
Mean	5.2	5.3	5.3	5.3
Median	6	6	6	6
Count	3619	5283	551	9453



5. How would you rate your professor's specific contribution to you learning in this course?

	Response by Course Level			
	Lower	Upper	Grad	Total
Excellent (6)	55%	60%	64%	58%
Very Good (5)	25%	23%	23%	23%
Good (4)	13%	12%	9%	12%
Fair (3)	5%	4%	3%	4%
Poor (2)	2%	1%	2%	1%
Unsatisfactory (1)	0.5%	0.8%	0.4%	0.6%
Mean	5.3	5.3	5.4	5.3
Median	6	6	6	6
Count	3619	5283	551	9453



Student Opinion of Teaching Effectiveness (SOTE)- College of University Studies Spring 2014 Term Summary

1. Rate your interest in the subject matter of this course before you took the class.

	Response by Course Level	
	Lower	Total
Very High (1)	23%	23%
High (2)	25%	25%
Moderately High (3)	19%	19%
Moderately Low (4)	12%	12%
Low (5)	13%	13%
Very Low (6)	9%	9%
Mean	2.9	2.9
Median	3	3
Count	228	228

2. How many class sessions did you attend?

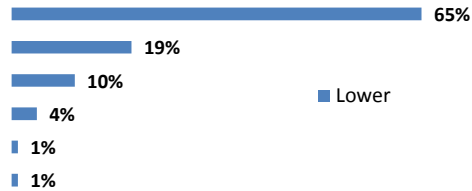
	Response by Course Level	
	Lower	Total
All (1)	45%	45%
Almost All (2)	51%	51%
More than Half (3)	3%	3%
Less than Half (4)	0.0%	0.0%
Mean	1.6	1.6
Median	2	2
Count	228	228

3. Why did you take this course? Choose all that apply.

	Response by Course Level	
	Lower	Total
3a. The course fulfills a general education requirement.	39%	39%
3b. The course fulfills a requirement in my major.	16%	16%
3c. I have enjoyed the professor's class(es) in the past.	2%	2%
3d. The course will improve job/career opportunities.	11%	11%
3e. The course sounded interesting to me.	15%	15%

4. How would you rate the overall quality of instruction in this course?

	Response by Course Level	
	Lower	Total
Excellent (6)	65%	65%
Very Good (5)	19%	19%
Good (4)	10%	10%
Fair (3)	4%	4%
Poor (2)	1%	1%
Unsatisfactory (1)	1%	1%
Mean	5.4	5.4
Median	6	6
Count	228	228



5. How would you rate your professor's specific contribution to you learning in

	Response by Course Level	
	Lower	Total
Excellent (6)	70%	70%
Very Good (5)	17%	17%
Good (4)	8%	8%
Fair (3)	3%	3%
Poor (2)	1%	1%
Unsatisfactory (1)	1%	1%
Mean	5.5	5.5
Median	6	6
Count	228	228

